

## BACKGROUND



Around 22,000 patients undergo emergency bowel surgery in England and Wales every year. The operation is associated with one of the highest mortality rates of all types of surgery.



NELA is part of the National Clinical Audit and Patient Outcomes Programme (NCAPOP), overseen by the Healthcare Quality Improvement Partnership (HQIP), and delivered by the Royal College of Anaesthetists.



NELA is the world's largest prospective audit into the processes of care and outcomes following emergency bowel surgery.

## SCOPE



NELA collects contemporaneous data around processes and outcomes of care for patients.

Care pathways are complicated and involve multiple hospital departments and specialties such as:

surgery

anaesthesia

critical care

emergency medicine



radiology

elderly care



## AIMS

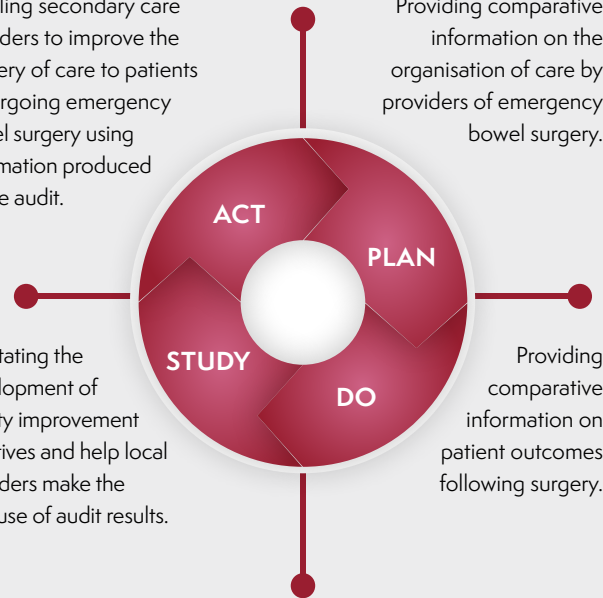
NELA aims to improve care and outcomes for patients undergoing emergency bowel surgery by:

Enabling secondary care providers to improve the delivery of care to patients undergoing emergency bowel surgery using information produced by the audit.

Providing comparative information on the organisation of care by providers of emergency bowel surgery.

Facilitating the development of quality improvement initiatives and help local providers make the best use of audit results.

Providing comparative information on patient outcomes following surgery.



## METHODS

- Adult patients (18+) undergoing emergency bowel surgery in NHS hospitals in England and Wales for conditions such as bowel obstruction, perforation, infection or bleeding are included in the audit.
- Data about processes of care are entered by members of the hospitals' clinical and audit teams to a secure and confidential online web-platform.
- Data is collected as part of an annual collection and reporting cycle.
- Requirement for specific patient consent is waived under section 251 of the NHS Act 2006.
- 30-day mortality data is supplied by the Office for National Statistics (ONS); Case ascertainment data is supplied by NHS England via Hospital Episodes Statistics reporting and Digital Health and Care Wales.
- NELA collates, analyses and returns data to local hospitals via monthly and annual hospital- and overarching national reports.
- NELA is a continuous audit programme, with embedded Quality Improvement functionality and real-time support for clinical teams.